

PART OF S.E. 1/4, SEC. 13, T.5N., R.3W., S.L.B. & M.

HOOPER CITY
LOTS 5 TO 6, PLAT "B"

TAXING UNIT: 376

SCALE 1" = 100'

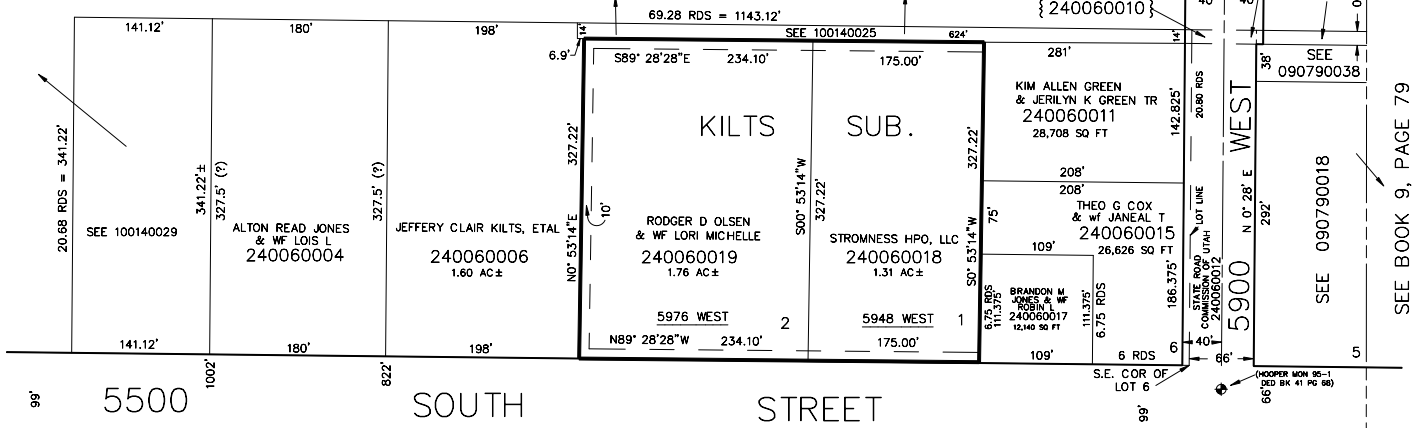
SEE BOOK 10, PAGE 14

STATE ROAD COMMISSION
{240060003}

STATE ROAD COMMISSION
{240060010}

DUANE W BOEHME
{240060002}

1578 sq. ft.
0.866 RD
T.5N., R.3W.



5500 SOUTH STREET

BLOCK 15, PLAT A BLOCK 16, PLAT A LOT 4

SEE PAGE 4